

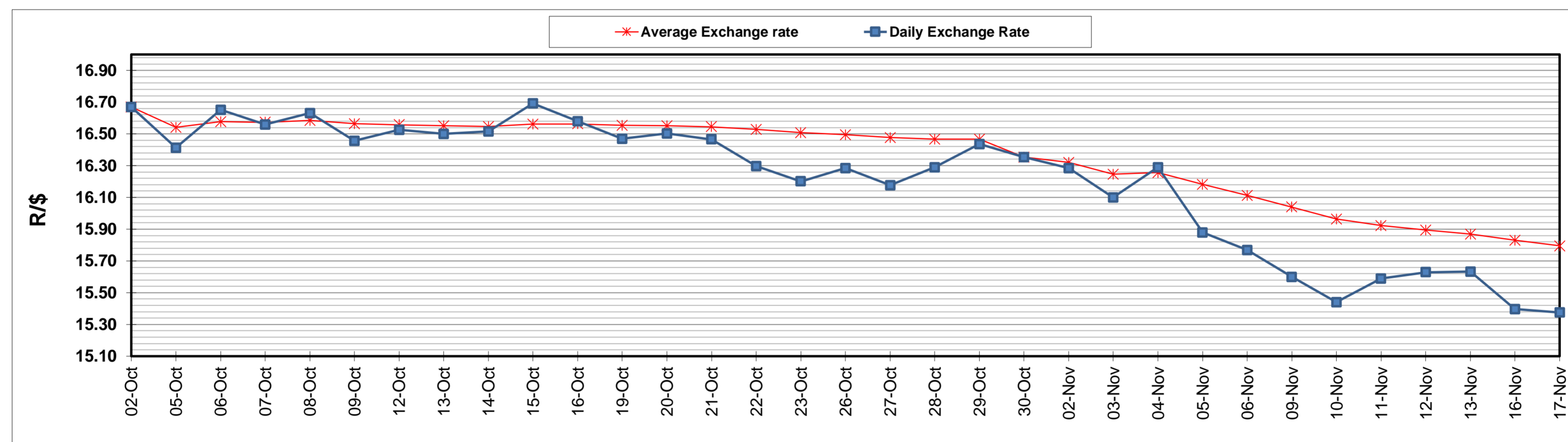
	PETROL 95 ULP	PETROL 93 ULP & LRP	DIESEL 0.05%	DIESEL 0.005%	ILL. PAR.
GAUTENG PUMP PRICE (SA c/l) AS FROM 04/11/2020	1,459.000	1,439.000	-	-	-
WHOLESALE PRICE (SA c/l) AS FROM 04/11/2020	-	-	1,225.560	1,227.960	655.828
SINGLE NATIONAL MAXIMUM RETAIL PRICE	-	-	-	-	818.000
BASIC FUEL PRICE - 17/11/2020 (SA c/l)	475.671	467.984	487.646	489.072	466.858
PRESS RELEASE CONTRIBUTION TO BFP 04/11/2020 - 17/11/2020 (SA c/l)	506.470	496.470	474.630	477.030	451.128
UNIT OVER/(UNDER) RECOVERY - 17/11/2020 (SA c/l)	30.799	28.486	(13.016)	(12.042)	(15.730)
AVERAGE BASIC FUEL PRICE 30/10/2020 - 17/11/2020	478.108	469.852	475.753	478.210	458.730
AVERAGE UNIT OVER/(UNDER) RECOVERY 30/10/2020 - 17/11/2020	34.593	32.849	1.646	1.358	(11.064)

### ANALYSIS MOVEMENT OF AVERAGE OVER/(UNDER) RECOVERY

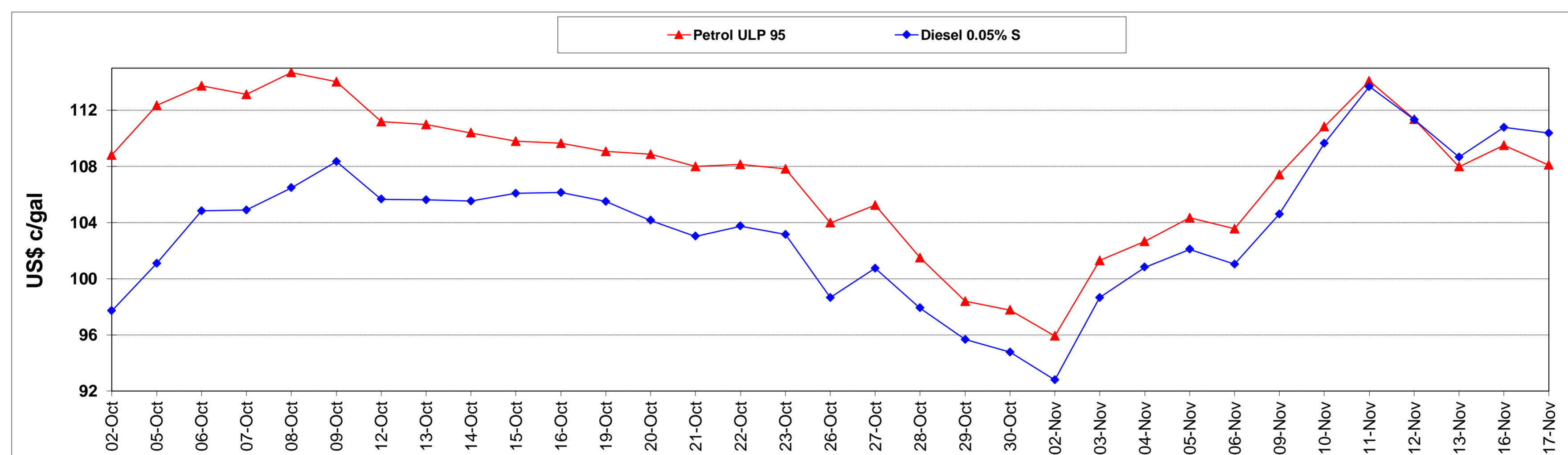
	PETROL 95	PETROL 93	DIESEL 0.05%	DIESEL 0.005%	ILL. PAR.
- MOVEMENT IN INTERNATIONAL PRODUCT PRICES	14.307	12.913	(18.540)	(18.932)	(30.528)
- MOVEMENT IN EXCHANGE RATE	20.286	19.936	20.186	20.290	19.464
AVERAGE UNIT OVER/(UNDER) RECOVERY 30/10/2020 - 17/11/2020	34.593	32.849	1.646	1.358	(11.064)

### R/\$ EXCHANGE RATE - (R/\$15.3753 - 17/11/2020)

#### EXCHANGE RATE USED IN BASIC FUEL PRICE



#### INTERNATIONAL PRODUCT PRICES OF BASKET USED IN BASIC FUEL PRICE



#### BASIC FUEL PRICE IN SA CENTS PER LITRE

